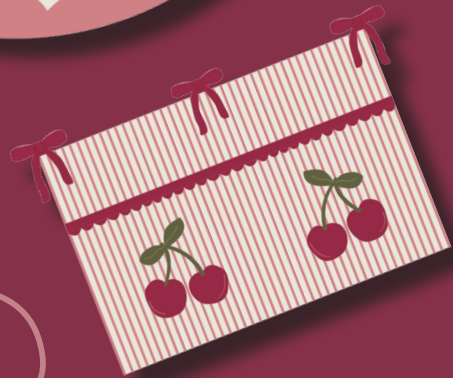
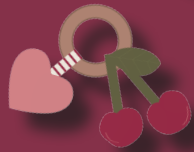
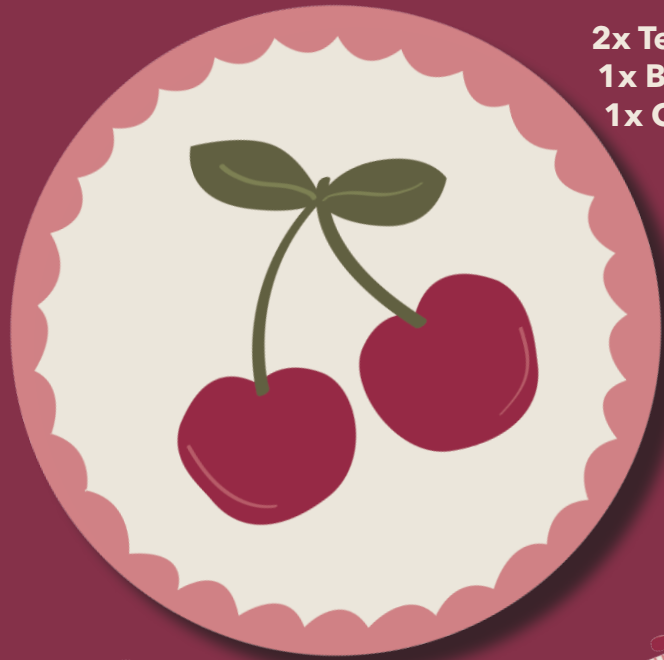


- 1x Playmat cherries front
90x90 cm
- 2x Teething ring hangers
- 1x Bed pocket organizer
- 1x Cot mobil with music

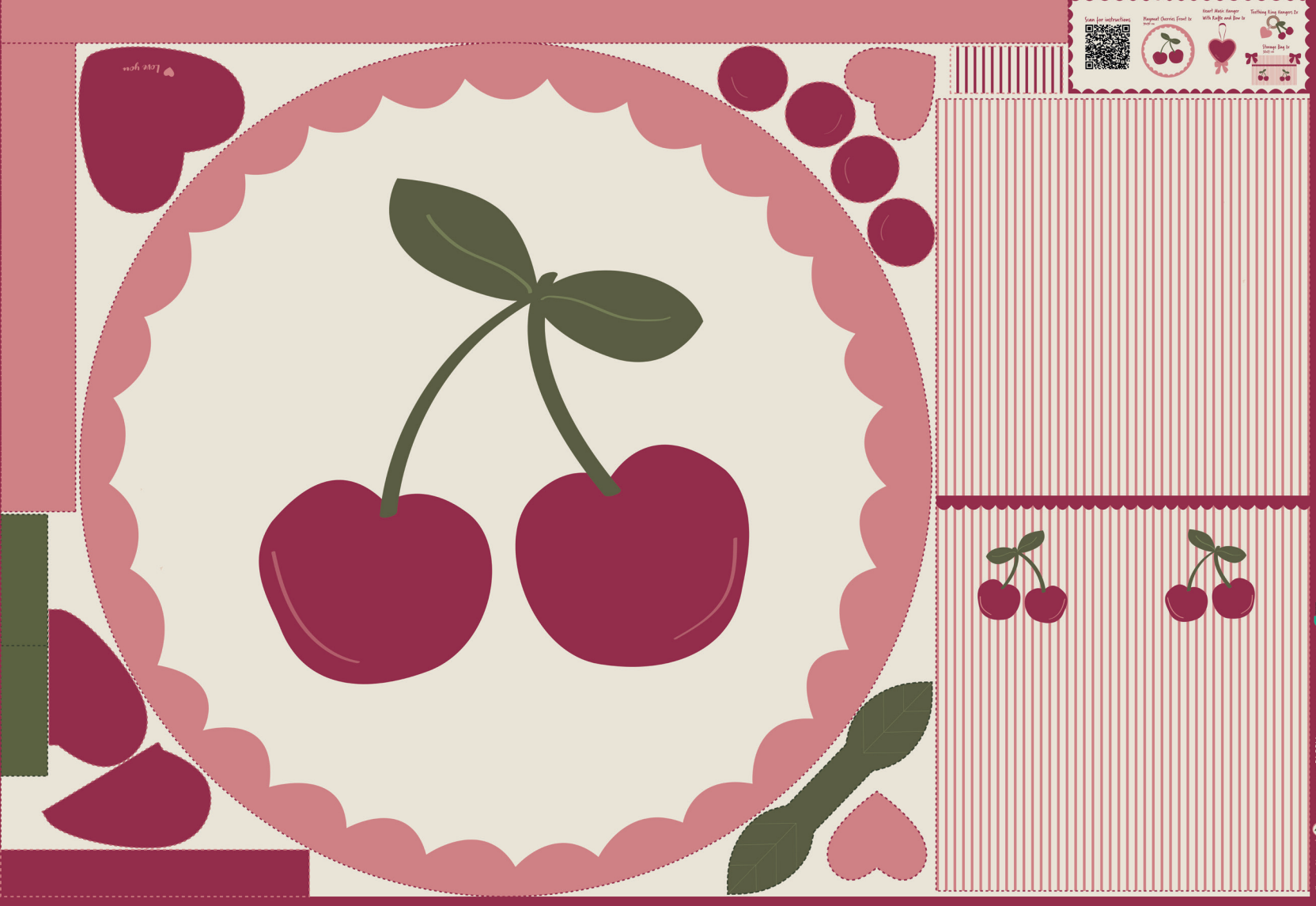


SCAN FOR
INSTRUCTIONS

CHERRIES PANEL

06853.001
148 cm x 100 cm





Scan the QR code to
 download this activity
 for free!

Playful Patterns Found in
 the World of Play!

What's the shape of
 your favorite fruit?
 Is it round, square, or
 heart-shaped?

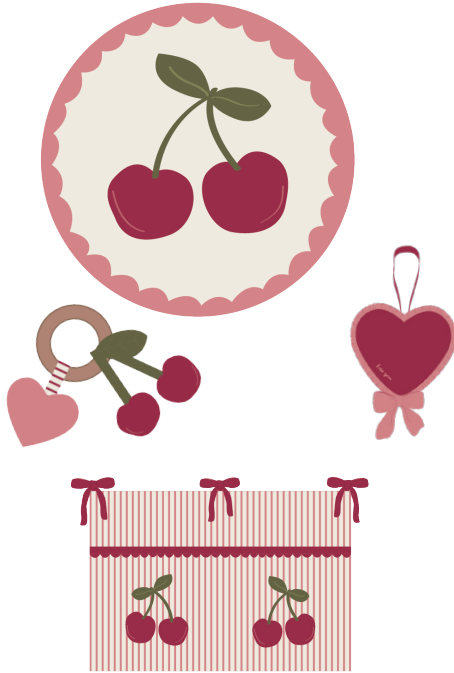
Talking About Shapes in
 the World of Play!

Share this activity
 with your friends!



CHERRIES PANEL

Fine Poplin
06853.001



Instructions

Required materials

- 1 DIY panel, article 06853 from POPPY FABRICS
- Matching fabric for the backside (we recommend: article Cotton Poplin 06006.006), total size Ø 91 cm
- Sewing machine and stitching thread
- Fiberfill 280grms Ø 90 cm
- Vlieseline H200 Fusible interfacing 40 x 85 cm
- Toy stuffing or similar filling
- Needle and thread
- Small piece of crisp paper, 10.5 x 6 cm
- Wooden ring 1 x Ø 7.5 cm
- Rattle box 1 x
- Music box 1 x

Pattern pieces

1. Playmat cherries front 1 x
2. Heart shaped cot mobile with music, including ruffle and bow 1 x
3. Teething ring hangers 2 x
4. Bed pocket organizer with bows 1 x

Instructions:

- First, cut out all the parts along the dotted line. The seam allowance of 1cm is included.

Iron fusible interfacing on the following parts:

- Backside of the bed pocket organizer

Make the following bias tapes:

- 1: bows for the storage bag
- 2: for the cherries hanger
- 3: for the heart teething ring hanger
- 4: for the cot mobile music hanger

1.

2.

3.

4.

- Cut the tape for bias tape 1 in half in both directions so it become 4 tapes. (You only need to make 3 tapes for the storage bag)
- Fold both long sides to the middle and iron. Fold and pin together and sew the bias tapes. Repeat for all 6 bias tapes.
- Cut bias tape 2 in half along the dotted line.

Cut to size:

Cherries Playmat, you can use the frontside off the playmat as cutting example to cut the following parts.

- Backside cherries playmat Ø 91 cm



- Fiberfill Ø 90 cm



Cherries Playmat

1. Pin the cherries playmat and the backing fabric right sides facing each other. Sew together leaving an opening for the fiberfill.
2. Turn the playmat, fill with fiberfill and close the opening by hand.
3. Topstitch along the outlines, like the yellow marking below.



Storage Bag:

4. Fold the fabric lengthwise right sides facing each other and pin.
5. Insert the three ribbons evenly between the top layers, positioning them towards the inside and pin. Stitch along the edge, leaving an opening for turning.
6. Turn the organizer right side out and close the opening by hand.
7. Fold the bottom of the bag upwards to approximately two-thirds of the total height to form pockets. Pin in place and topstitch both sides, stitching 0.5 cm from each edge.
8. Topstitch vertically down the center to divide the pocket section into two pockets.
9. Form bows with the ribbons while attaching the bag to the box.

Heart Music Hanger

Heart:

10. Pin the backside heart pieces with right sides facing each other to create the heart backside. Sew from both outer edges towards the centre, leaving an opening in the middle for turning and inserting the music box.

Ruffle:

11. Fold the fabric double lengthwise with right sides facing each other. Sew the short edge to form a circle.
12. Fold the circle in half with wrong sides facing each other.
13. Set the sewing machine to a long stitch (4–5). Sew two parallel gathering lines 0.5 cm and 1 cm from the edge.
14. Gently pull the threads to gather the fabric until the ruffle measures approximately 53 cm. Secure and trim the threads.
15. Find the centre of the ruffle and align it with the centre of the front heart piece.
16. Pin from the centre outwards, distributing the gathers evenly.
17. Sew the ruffle in place along the gathering lines using a normal stitch length.
18. Fold the bias tape in half lengthwise to create a loop for hanging the cot mobile hanger, positioning it toward the inside and pin.
19. Pin the backside heart piece in place with right sides facing each other. Stitch through all layers, enclosing the ruffle. Leave a small opening of approximately 2 cm at the bottom of the heart. Remove any remaining gathering threads and finish the seam.
20. Turn the heart right side out, fill with toy stuffing and insert the music box. Guide the ribbon through the opening and close the opening by hand, ensuring the ribbon moves smoothly.
21. Close the backside opening of the music heart by hand.

Bow:

22. Fold the fabric widthwise with right sides facing each other. Stitch around, leaving an opening for turning.
23. Turn right side out and close the opening by hand.
24. Tie the bow around the ribbon of the music box.

Teething Ring Hangers

Cherries:

25. Pin the cherry pieces with right sides facing each other. Sew around, leaving an opening at the top for stuffing.
26. Turn right side out, fill with toy stuffing, insert one end of the bias tape and close the opening by hand.
27. Repeat for the second cherry.

Leaf:

28. Fold the leaf in half with right sides facing each other, sew around leaving an opening for turning.
29. Turn right side out, insert the crisp paper and close the opening by hand.
30. Topstitch along the light green lines.
31. Fold the leaf around the wooden ring, insert the bias tapes with the cherries and close by hand.

Hearts:

32. Pin the heart pieces with right sides facing each other. Sew around, leaving an opening at the top.
33. Turn right side out, fill with toy stuffing, insert the rattle box and bias tape, and close the opening by hand.
34. Fold the bias tape around the wooden ring and sew securely by hand.